

Dear Community,

RE: FIRST NATIONS BILAI, GURANG, GOORENG GOORENG, TARIBELANG BUNDA PEOPLE RNTBC ICN: 8650 - CONSULTATION AND CONSENT ROADSHOW

The Registered Native Title Body Corporate ('**RNTBC**') have been negotiating an Indigenous Land Use Agreement ('**ILUA**') in relation to a Wind Farm Project within the boundaries of the First Nations Bailai, Gurang, Gooreng Gooreng, Taribelang Bunda People Native Title Determination area (QUD6026/2001; QCD2017/010) and invite the Native Title Holders to the upcoming meetings to consult with them about this project.

The Native Title Holders as described in the Consent Determination are the descendants of the following apical ancestors:

- a) Dina;
- b) Jessie;
- c) Dolly (mother of Johnson Matemate and George Swain);
- d) Molly Jones;
- e) Dulhu/Doolan;
- f) Buller Tolsen (Norman Buller);
- g) Nellie Murray (also known as Nellie Watcho and Alice Murray);
- h) Jane;
- i) Betsy;
- j) Rosie;
- k) Maggie Little;
- l) Rosie Blackman;
- m) Emma Jones (wife of John Broom/e);
- n) John Hill ("Pig Pig");
- o) Elizabeth Tan Watt/Daniels;
- p) Kitty of Gladstone; or
- q) Margaret Grant.

Set out below are the towns, venues and times for the meetings:

Town	Date	Venue	Time
Bundaberg	26/10/2020	Bundaberg Multiplex <i>1 Civic Avenue, Bundaberg 4670</i>	2:30PM
Gladstone	27/10/2020	Rydges Gladstone <i>100 Goondoon Street, Gladstone 4680</i>	2:00PM
Rockhampton	28/10/2020	Dreamtime Cultural Centre <i>703-751 Yaamba Road, Parkhurst 4700</i>	2:00PM
Eidsvold	29/10/2020	Eidsvold Community Hall <i>50 Moreton Street, Eidsvold 4627</i>	2:00PM
Brisbane	30/10/2020	Virginia Palms <i>Sandgate Rd & Zillmere Rd, Boondall 4034</i>	2:00PM

Videoconferencing facilities will be available for those not attending the meeting in person. Please contact the PCCC Trust office on 07 4167 0037 to register to attend by videoconference.

For those attending in person, this meeting will be a COVID-19 safe event:

- Facemasks and hand sanitiser will be available;
- Each attendee will be provided with clean stationery to use if required;
- Attendees will be required to abide by strict social distancing requirements at all times.

Proposal to be Discussed

1. Specimen Hill Wind Farm

Epuron approached the RNTBC in May 2020 to negotiate an ILUA for the construction of a wind farm along the Calliope Range, just south of the Dawson Highway. The wind farm will include a number of wind turbines located within the First Nations Bailai, Gurang, Gooreng Gooreng, Taribelang Bunda People Determination Area.

Please see **attached** a map of the area proposed for the project, together with information regarding the Wind Farm Proponent (Epuron) listing their experience in the industry.

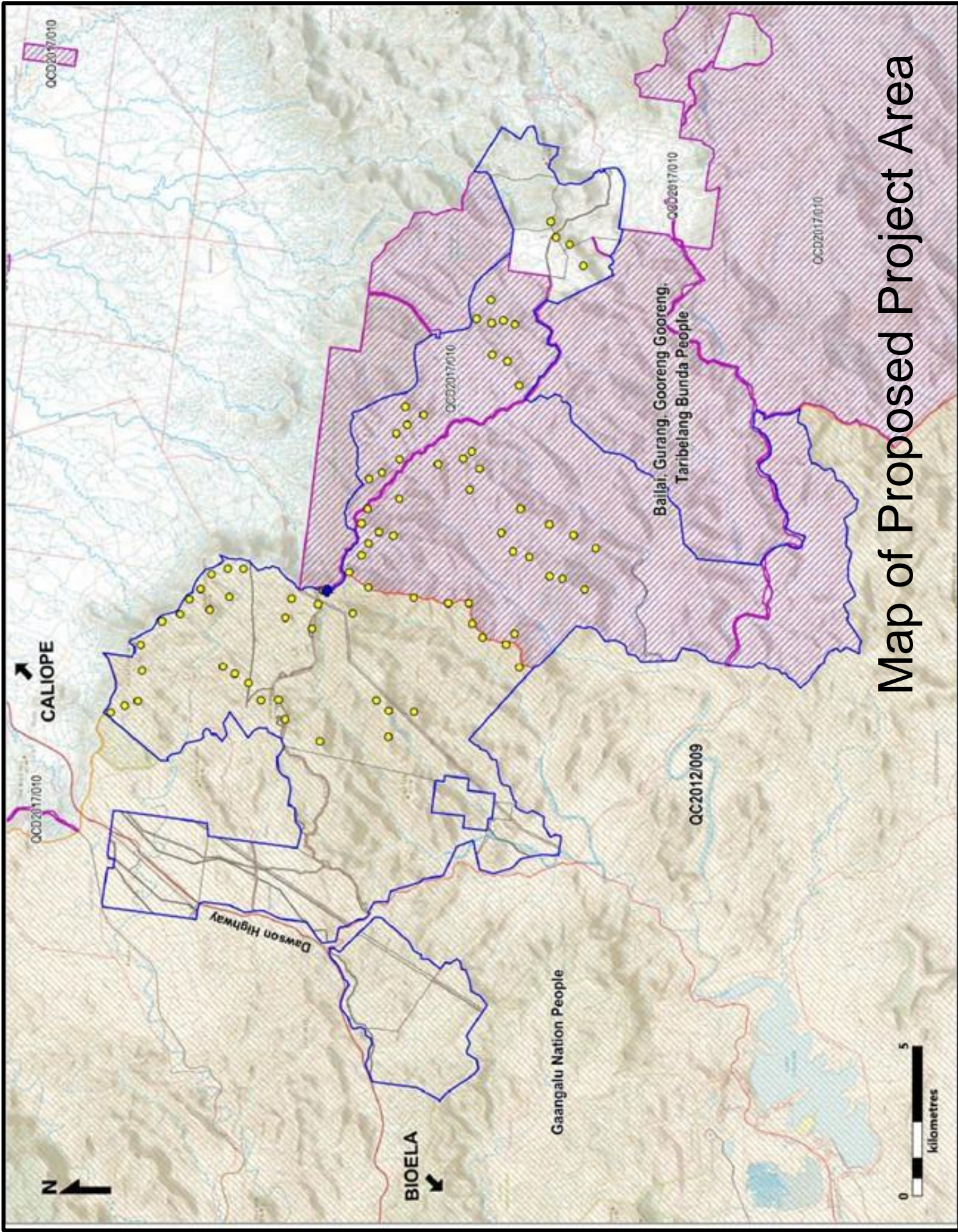
The RNTBC met with Epuron on a number of occasions to discuss this project and have formulated an agreement to discuss with the Native Title Holders.

The Directors will be in attendance at these meetings and they encourage you to attend and participate.

There will be no travel assistance for the meetings, however light refreshments will be provided at each meeting.

Kind regards,

First Nations Bailai, Gurang, Gooreng Gooreng, Taribelang Bunda People Aboriginal Corporation



Map of Proposed Project Area

Information regarding Wind Farm Proponent



Developing renewables since 2003



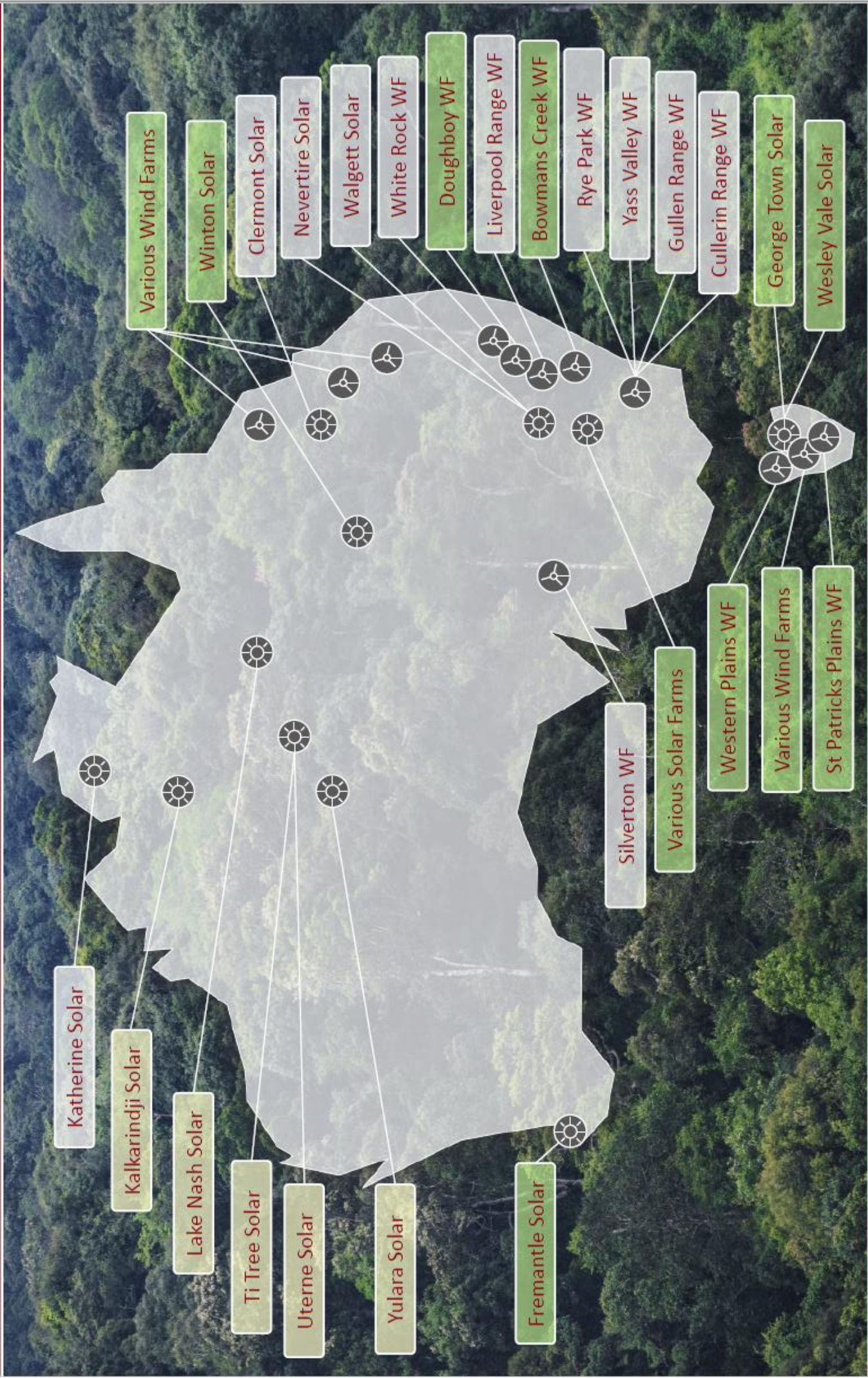
- ▶ **4000** megawatts of wind farm development experience
- ▶ **8** approved wind farms
- ▶ **9** new projects underway across 3 states



- ▶ **400** megawatts of solar farm development experience
- ▶ **5** solar farms operating across Australia
- ▶ **8** new projects underway across 4 states



EPURON





Wind farm track record



Cullerin Range

- 30MW, 15 turbines
- Commissioned 2009
- Built by Origin, now owned by EDL



Gullen Range

- 165MW, 73 turbines
- Commissioned 2014
- Owned by Goldwind



White Rock

- Up to 119 turbines
- 175MW Stage 1 commissioned 2018
- Owned by Goldwind



Silverton

- Up to 598 turbines
- 200MW Stage 1 under construction
- Owned by AGL



Yass Valley

- 79 turbines, up to 284MW
- DA Approved
- Acquired 2017 by Goldwind



Rye Park

- 94 turbines, up to 327MW
- DA approved
- Acquired 2014 by Tilt Renewables



Liverpool Range

- 282 turbines, up to 979MW
- DA approved
- Under Option



Under development

- Multiple sites in NSW, QLD, TAS
- Early stage development
- Typically 100-300MW per site