

# Muendem Gaangu August 2017





# TUMRA NEWSLETTER



Spirit of Port Curtis

## Contents

1.....	Cover
2.....	Spirit of Port Curtis
3.....	Contents Page
4.....	Coordinators Report
5.....	Welcoming New Staff
6.....	Gladstone Healthy Harbour Partnership
6.....	Gladstone Ports Corporation
7.....	Sea Ranger Program
8.....	School Based Traineeship Sea Ranger Program
9.....	Mon Repo Turtle Program
10.....	Turtle Monitoring Program
10.....	Mangrove Watch Program
11.....	Cultural Heritage Survey (GBRMPA)
12.....	Sea Grass Restoration Project
12.....	Skilling Queenslanders for Work Program
13.....	Central Queensland Language Centre
14.....	Tumra Steering Committee Meeting
15.....	Yalga Binbi Instatuite
16.....	Environment Marine Training Centre
17.....	EMTC Room Hire Rates
18.....	Managing Director Kerry blackman
19.....	TUMRA Map
20.....	Contact Us



# FROM THE COORDINATOR

## PCCC TUMRA

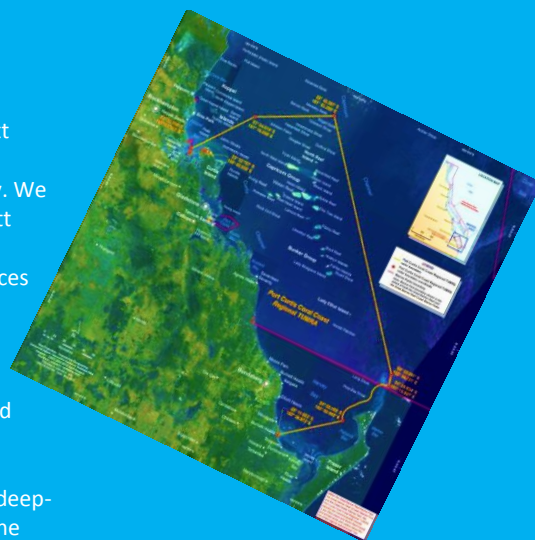
I am proud to present my first TUMRA newsletter. My name is Brent McLellan and I am the newly appointed PCCC Tumra Coordinator based at Gidarjil's EMTC (Environment & Marine Training Centre) located at the Bundaberg Port Marina. I am also a traditional custodian of Tarebilang Bunda.

The Port Curtis Coral Coast (PCCC) TUMRA is the largest of its kind and is unique, as it sits mostly in the Great Barrier Reef but is also situated in the Great Sandy Strait. It covers over 26 000 km<sup>2</sup>, of which 20 000 km<sup>2</sup> is in the Great Barrier Reef and the remaining 6 000 km<sup>2</sup> is in the Great Sandy Straits. With the implementation of the TUMRA many objectives have been achieved with little resources. We have erected TUMRA signs at most boat ramps welcoming people to the PCCC Traditional Owner Sea Country, have a TUMRA Agreement with GBRMPA and MOU with QPWS. We work with Department of Boating and Fisheries on indigenous fishing compliance; on the GHHP Management Committee and the Gladstone Ports Technical advisory consultative committee.



We currently have land and sea rangers based in Gladstone and a sea ranger team in Burnett Heads to achieve all of our aspirations. The need to have dedicated sea rangers is growing stronger every day with industry, community and government impacting on our sea country. We also have an environmental and marine training Centre in the PCCC region located at Burnett Heads, which will help develop Traditional Owners to build a science knowledge base to complement their traditional knowledge and to better understand the impacts different forces are having on their Sea Country and how this can be slowed or stopped progressing into the future.

Managing our Sea Country is an ancient cultural duty managing both terrestrial and marine estates and their precious resources is an important aspect of traditional life in mainland and island communities. Many Indigenous coastal communities adhere to ancient practices of sustainably harvesting marine species. The Aboriginal and Torres Strait Islander Sea Ranger Program is built on cultural foundations dating back 60,000 years or more. It harnesses the deep-seated desire of Australia's traditional owners to lead the way in protecting and managing the ocean, rivers, tributaries and tidal floodplains surrounding their homelands.



## ENVIRONMENTAL MANAGEMENT PROGRAM PRIORITIES

The key priorities of the PCCC Sea Country Management is to equip communities and regional partners with the necessary skills, capacity, information, resources and technical support necessary to tackle the key environmental issues facing the Port Curtis Coral Coast region.

The aims of the Program are to achieve sustainable management of natural resources; manage the effects of climate change, tidal inundation and erosion; encourage the utilisation of renewable energies; reduce the environmental impacts of waste management and improve land management for future.

## LAND & SEA MANAGEMENT STRATEGY

The Land & Sea Management Strategy for PCCC is currently being revised and updated to reflect achievements and learnings over the past several years, in line with the best available scientific information and current community and Traditional Owner priorities and aspirations for the culturally and ecologically sustainable management of the PCCC unique values into the future.

# Welcoming New Staff



*Brent McLellan- PCCC TUMRA Coordinator*

Traditional Owner Group: Tarebilang Bunda

"I look forward to the many challenges and exciting future ahead, meeting many diverse people in a number of locations throughout the PCCC region, it's an absolute honour to be working with Gidarjil and alongside my own people to take care and protect our beautiful sea country"



*Tom Osborne- Sea Country Manager*

"I have had the pleasure of working for Gidarjil since November 2016. My employment background includes the establishment and management of the Tom Quinn Community Centre (2002-2016). This role included facilitating a training organisation, an alternative school, commercial operations and disabled and homeless services. I have previous experience working with Indigenous organisations and look forward to working with the enthusiastic Gidarjil Family as we continue to grow our influence within the community"



*Corrie McColl - Yalga Binbi Compliance Manager*

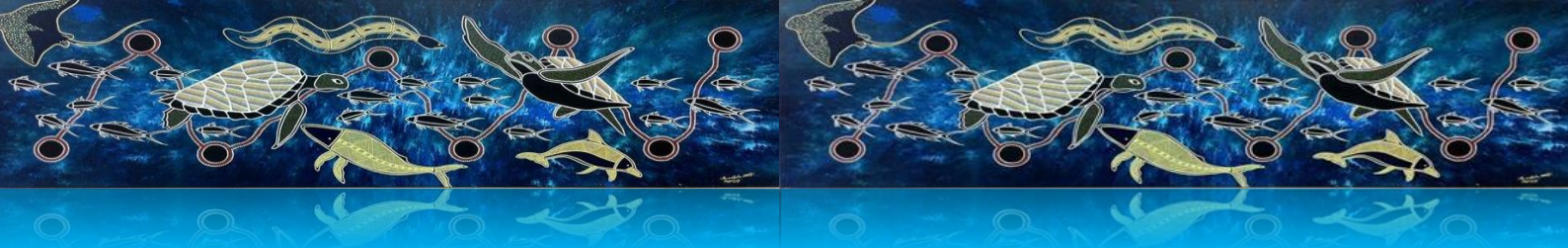
"I was raised in Townsville where I completed a Fitting and Turning apprenticeship, Since 1992 I have worked as a senior manager at Geraldton, Gympie and Bundaberg TAFEs'. I have post graduate and diploma qualifications in management and quality auditing and a degree in education. I left TAFE after 25 years to take up the new role with Yalga-binbi with the goal of developing relevant new training programs aimed at supporting the career aspirations of local people.



*Quinten Springham - Sea Ranger Coordinator*

Quinten Springham is a Traditional Owner from the "Gurang" and "Goreng Goreng" people. Quinten comes to Gidarjil, with over 20 years work experience, across a number of areas that include, NRM, Cultural Heritage, Government Administration, Environmental Monitoring & Compliance, as well as business administration. Quinten's Background is in Health Safety and Environmental Management, having completed a BA App in Science – Majoring in Environmental & Coastal Management, as well holding a Cert IV in WHS and Adv Diploma in Project Management. Quinten's Goal is to develop and lead a team of Sea Rangers, to become one of the best in the country in managing the sea and marine environments.





## Gladstone Healthy Harbour Partnership (GHHP)

The Gladstone Healthy Harbour Partnership (GHHP) includes Community, Industry, Research and Government. The purpose of the partnership is to implement an adaptive management framework and deliver a shared vision for a healthy Gladstone Harbour. The PCCC TUMRA is a member of the GHHP. The new TUMRA coordinator will represent the PCCC TUMRA Committee.



The Gladstone Healthy Harbour Partnership (GHPP) focuses on best practice collaborative monitoring and management of the Harbour. The community, industry, the Australian Government, Queensland Government, local government, Universities and Research Institutions partner's agree to invest in the strategic directions and leverage the benefits of streamlined monitoring, targeted management and expert science advice.

Importantly, the Partnership delivers an annual report card on the health of the Harbour, based on the best available science as well as broad community input. The vision for the partnership is Gladstone has a healthy, accessible, working Harbour.

## Gladstone Ports Corporation (GPC)

We have been invited to sit on the Technical Advisory Consultative Committee for the Gladstone Ports Corporation to give our input into the affects industry is having on the Gladstone and Bundaberg Ports and surrounding area from a Traditional owner's point of view. We are currently working close with the Gladstone Ports Corporation to achieve outcomes in the environmental space. This will be further documented in the next report.



# Sea Ranger Program (SBR)

Our Gladstone rangers have continued to work with James Cook University monitoring on their Mangrove Monitoring Program (Mangrove Watch) which include a survey throughout the PCCC Area.

They are working with QPWS (Queensland Parks and Wildlife) on Curtis Island for weed removal, scoping on-going work and boat patrols.

All rangers now have fire management and ACDC Chemical accreditation training, which is critical in sourcing on-going work for sites such as Curtis Island.

Rangers have investigated fish traps and hidden sites along the Calliope Ana Branch.

We have worked with Dept of Main Roads and Central Queensland Language group to develop traditional signage in TUMRA region.

Gidarjil's senior ranger Mick Wilmont has been involved in water quality assessment with FBA (Fitzroy Basin Association) in Boyne Valley.

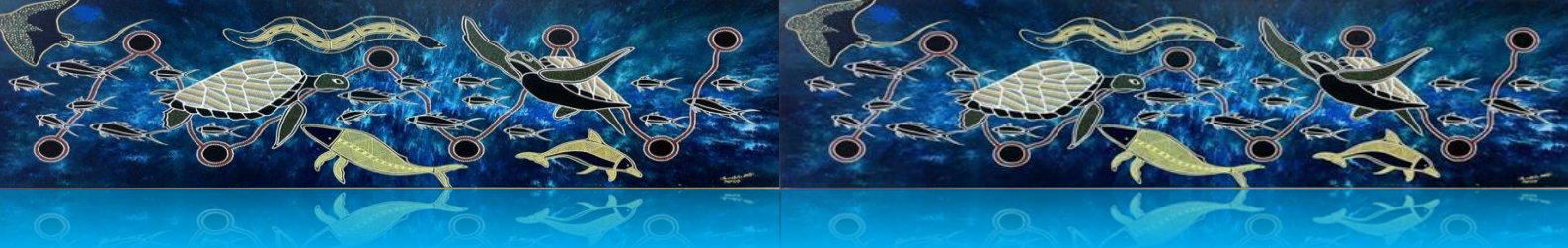
A fencing option to restrict cattle access has been established for the Narrows quarry site, materials sourced and currently awaiting access clearance from land holder.

The Bundaberg rangers continue to be involved in turtle monitoring at Mon Repos in conjunction with Queensland Parks and Wildlife Service doing shore work involving participation in turtle conservation including monitoring and data collection of nests, moving of nests, checking dog traps baiting feral animals and are actively engaged in habitat regeneration on the shore. This monitoring is currently happening every year with the expansion of the project this year to include monitoring on the beaches that weren't currently being monitored in the PCCC region.

We continue to facilitate our Bundaberg Junior Ranger program in conjunction with Jakanyula Childcare Group. Activities during the past year have included a trip to Underwater world at Mooloolaba, a Mangrove and Australian marine Debris Initiative workshop at Wallace Creek wetland at Burnett Heads and a Cultural Heritage Trip to bunya Bunya Mountains.

We are currently -

- working in the Southern Great Barrier Reef CHAMP with JCU's TropWATER a 2-year project that concludes in 2018.
- Monitoring Mangrove & Seagrass in all major estuaries of PCCC country
- Consulting with Bundaberg Sugar at Avondale Plantation regarding proposed mangrove and adjacent riparian zone rehabilitation on the Kolan River.
- Collaborating with GPC Bundaberg in planning and kicking off rehabilitation of the Wallace Creek Reserve at Burnett Heads
- We have a very active Marine Debris program linking with multiple partners including but not limited to Tangaroa Blue, CQU, Burnett LMAC and GBRMPA



## School Based Traineeship Sea Ranger Program

The Gidarjil school based Ranger program was developed to create a pathway for young indigenous people into meaningful employment or higher education whilst at the same time connecting them to country.

Sixteen Bundaberg students and eight Gladstone students have enrolled in the program and have embraced this opportunity through structured vocational training in Horticulture, working with senior Rangers on cultural heritage projects and paid work opportunities.

Gidarjil are partnering with the Australian Government's Department of Prime Minister and Cabinet and local High Schools to make this project possible and already the results are encouraging.



In June/July 2017, the students completed paid employment over the school holidays experiencing Heritage visits, shore patrols, nursery visits, marine debris clean-ups, establishing nature buffer zones and helping with NAIDOC activities.



According to Sea Country Manager Tom Osborne, the students wore their uniforms with pride, were engaging with all work activities, and were very keen to be involved in their cultural heritage.

For many students, the program has seen a marked increase in

attendance levels. Gidarjil will continue to mentor these young people to ensure they finish year 12, to gain their Certificate II in Horticulture and transition into work or higher education

# Mon Repo Turtle Program

As part of the Indigenous Sea Ranger Program, Gidarjil in partnership with DEHP have a Sea Ranger based at Mon Repos. The position is based at Mon Repos for the entirety of the turtle season. DEHP also conducts a week long Ranger training camp at Mon Repos. This program educates Indigenous

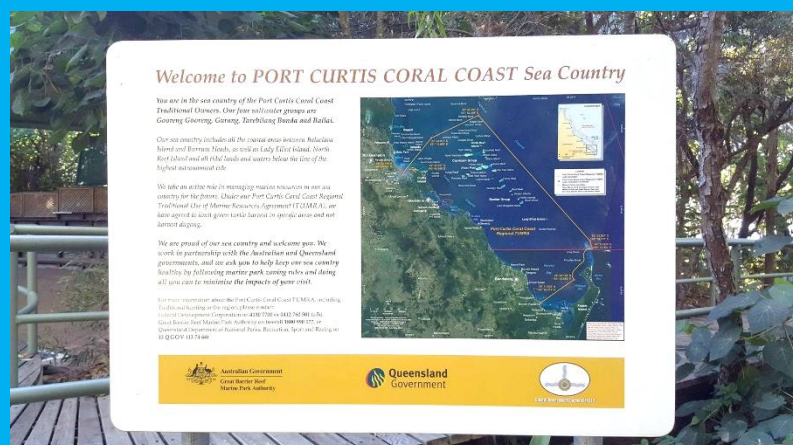


rangers on monitoring and recording of Marine Sea Turtles research for the purpose of data collection. How to collect data by digging nests, conducting post-hatching egg counts, measuring, tagging and relocating nests. It also teaches them how to count clutches, hatchlings and notching the hatchlings as well as measuring and weighing the hatchlings. Measuring and weighing the turtle eggs. Species identification by tracks and sight of turtle. Gidarjil is the recognized host body for the many traditional owner groups attending the training through the turtle season program.

The Rangers also learnt about Incubating eggs for experiment of sand temperatures. When an egg is incubated at 24-27 degrees the Turtle will be male between 28 & 34 the Turtle will Be female. The Rangers also learnt how using Ultrasound on the turtle's reproductive system it can be seen if the turtle will lay any more that season. There has also been training on GPS tracking via satellite to monitor navigation of the turtle's route. This can determine the lifecycles route of the turtle including laying grounds and courtship area.

Our TUMRA sign has been erected at Mon Repos welcoming people to the PCCC Traditional Owner Sea Country.

The sign is a valuable tool used for educating the general public on the TUMRA. It provides critical information of the importance of this site to aboriginal people and environmental importance.





## Turtle Monitoring

The Queensland and Commonwealth governments have contributed a total of \$7million for this 4-year project which has over a year left to operate. The program is designed to help reduce the threat of feral predation on marine turtle nests.

The program focuses on protecting marine turtle eggs and hatchlings from predation by feral animals through monitoring of nesting areas, fox den fumigation, trapping and predation. Ranger patrols covers turtle rookeries from Eurimbula Beach in the north, (Gladstone rangers), to Rules Beach and Wreck Rock south, (Bundaberg rangers).

Key rookeries such as these have been identified and prioritized by the **nest2Ocean** project.



In partnership with Gladstone Port and DEHP, Gidarjil is also monitoring turtles under the guidance of Dr.Col Limpus. This is a 5-year project, which expires in 2020. It involves boat-based capture and return to shore for data collection and release back into the ocean.

## Mangrove Watch



Gidarjil continues to partner with James Cook University on their Mangrove Watch program. This partnered program involves boat work measuring and recording mangrove health. This year the mangrove watch monitoring will include surveys in the entire PCCC region working with our Rangers, Volunteers and the Boyne Island Environmental Education Centre. As summer arrives Mangrove Watch activity has slowed and our Rangers are passing time reviewing the recently developed JCU training video in readiness for expanding our SVAM (Shoreline Video Assessment Method) coverage of Port Curtis (*Koongo Yallarm*).

Gidarjil are in the process of purchasing a suitable vessel to assist with programs such as Mangrove Watch. Gidarjil now has Mangrove Monitoring projects from Bundaberg to Gladstone which will keep rangers from both areas very busy.

# Cultural Heritage Survey (GBRMPA)

Gidarjil Facilitated a consultation process on Aboriginal and Torres Strait Islander heritage management issues and aspirations for its Traditional Owner Groups.

The process was to provide a forum that allowed traditional owners to discuss how they manage heritage, what's working and what's not and to discuss and provide solutions for consideration.



On the 18/03/2017 a workshop was facilitated at Gidarjil's Port Marina Training facility for representatives of the four PCCC groups. A total of 8 traditional owners participated in this workshop, Tarebilang Bunda (2), Byellee (2), Gurang (2), Gooreng Gooreng (2).

Additional one on one interviews were conducted with 4 traditional owners Tarebilang (2) Gurang (1) Gooreng Gooreng (1).

The process was facilitated by Brent McLellan (TUMRA coordinator and traditional owner of the Tarebilang Bunda Group).



A summary of feedback and an appendix on all responses was also completed.

It was indicative of the importance placed on managing indigenous heritage and safe guarding culture, all the Indigenous people represented in this research were generous with their time and were willing to be mentioned as participants and quoted where appropriate.

The process was especially beneficial to the younger generation of traditional owners involved, who felt like their opinion mattered and that they were eager to learn more from their elders.



## Sea Grass Restoration Project

Our Rangers continue to work with **Dr Emma Jackson** and CQU whenever possible to progress the seagrass restoration project. Dr Jackson's Seagrass project examines the science behind seagrass restoration or recruitment and is funded through the Queensland government and CQ University.

The rangers have worked closely with Dr Jackson several times during the past 12 months, at Central Queensland University Gladstone and throughout the Gladstone Area.



## Skilling Queenslanders for Work (SQW)

Skilling Queenslanders for Work provides training to people who are under-utilised or under-employed in the labour market, as well as building the skills of young people, Aboriginal and Torres Strait Islander people, people with disability, mature-age job seekers and people from culturally and linguistically diverse backgrounds.

Gidarjil was successful in gaining funding for the current round which commenced in May 2017 and finishes in December. The funding packages included a **Certificate I** in Conservation and Land Management from Gidarjil's Gladstone Office and Certificate I in Conservation and Land Management to develop a nature reserve in Gin Gin.

Gidarjil has recently been successful in gaining approval for two similar traineeship programs, Certificate I in Conservation and Land Management Gin Gin, and Certificate I in construction based at Thorne Hill Station near Miriam Vale QLD.



Photo: SQWs looking forward to their work.

# Central Queensland Language Centre

The Central Queensland Language Centre region stretches from South of Sarina, West to Longreach and South to Cherbourg. There were approximately 50 Languages within this region and the CQLC is currently working on 12 of these Languages. They include Gooreng Gooreng, Gurang, Taribelang, Byelle, Dharumbal, Yiiman, Wakka Wakka, Ghungulu, Baradha, Bidjara, Wadjingu and Toolooa.



The theme for the Bundaberg Naidoc Week 2017 was “Our Languages Matters” so the CQLC has increased its workload to meet the demands of Community requests, to enable them to be willing partners in language reclamation.



Central Queensland Language Centre are in the process of finalising our Priority Endangered Language Program which consists of Byelle, Yiiman and Taribelang. These three languages were close to extinct and with little documented evidence are now an integral part of our Language Reclamation Program and we will soon be working with the language community to increase the use of their language.



The Central Queensland Language Centre offers weekly Community Language Lessons leading up to an Immersion day where participants will extend their use of common words and phrases. These lessons are ongoing and all are welcome to participate.



## TUMRA STEERING COMMITTEE MEETING

The Tumra Steering Committee met on the 24<sup>th</sup> of March 2017 to discuss upcoming issues surrounding the management of the PCCC Sea Country. This was also an opportunity to vote on new steering committee members.

Leon Jackson from Great Barrier Reef Marine Park Authority was also there to participate in our meeting and talk about the relationship of GBRMPA with the Tumra Committee.

We would like to welcome the following new and existing members and we look forward to their input surrounding the Sea Country Management;

-Richard Johnson- Gooreng Gooreng

-Greg Blackman- Gurang

-Mervyn Johnson- Gooreng Gooreng

-Kerry Blackman- Gurang

-Charles Colman - Byellee

-Dean Sarra- Tarebilang Bunda

-Brent McLellan – Tarebilang Bunda.

-Michael Cooke – Byellee





## Yalga-binbi Institute for Community Development

---

Yalga-binbi Institute for Community Development is an established registered training organisation based at Gidarjil's Environmental Marine Training centre at the Port of Bundaberg.

It aims to provide skills and knowledge primarily for Indigenous people both in the Central Queensland and Wide Bay regions and, throughout Queensland where required. The provision of higher vocational education and training is vitally important for the economic development and future empowerment of people. Yalga-binbi takes training very seriously and works hard to meet the needs of individual learners by recognising that each person has different learning styles and needs. It is through these individually customised training programs that Yalga-binbi Institute becomes the training provider of choice amongst Indigenous people.

Yalga-binbi Institute works with the TUMRA Co-ordinator and Gidarjil to establish training needs in the areas of land and sea based ranger activities. It works along-side the Skilling Queenslanders for Work initiatives and plans to provide quality and flexible training that suits the specific work roles of those projects. The immediate programs to be considered will include the Certificate I in Construction and the Certificate I in Conservation and Land Management.

The YBI has developed a marine and coastal management programs for delivery which will be utilized to support trainees of the future. The cert II in coastal management is being developed to fit with the national training package.

Yalga-Binbi will develop and provide training across the areas of marine craft operations and safety at sea. The coxswain program is vital to the expansion of the sea ranger program. These skills will be complimented by elements of support safety, recreational boat licencing and SCUBA. Other areas planned include marine tourism and marine deckhand training.

Recently, Yalga-binbi implemented an innovative on-line learning management system that allows students to access foundation skills learning materials on-line from any mobile device or a home computer. The learning resources are based on a paperless learning system and includes formative and summative self-assessments. Student can enjoy the process of learning either at the training facility or within the comfort of their own home.

To complement its' vocational programs, Yalga-binbi Institute can perform a training needs analysis to identify current skills and the skills gaps where further training may be required. The training needs analysis considers the person's current skill level and the skills required to do the job. Students can identify the programs that best suit their work roles and work with Yalga-binbi Institute to realise the best learning pathways to achieve their goals. Yalga-binbi Institute looks forward to being a part of every student's journey of life-long learning.



# Environment Marine Training Centre



The Environment Marine Training Centre (EMTC) ideally located at Bundaberg Port Marina, is the operational hub for collaboration, TUMRA, workforce development, sea country management and training.

Our services include:

- Traditional Use of Marine Resources Agreement (TUMRA)
- Sea Ranger Operations
- Research Data Collection and Report writing
- Cultural Tourism
- Yalga Binbi Institute

We also operate a well-resourced conference center and a computer Laboratory that is attracting lots of interest from the community and business sector.



# EMTC Room Hire Rates

2 MARINA Drive Burnett Heads, QLD 4670

Phone: 07 4159 5276

## Conference Facility

**Hourly Rate**     \$ 75.00 per hour

(minimum hire 3 hours)

**Half Day Rate**     \$ 350.00

(maximum 5 hours)

**Day Rate**             \$ 650.00

(maximum 10 hours)

**Day and Evening Rate**     \$ 900.00

(full day and night)



## Administration Board Room

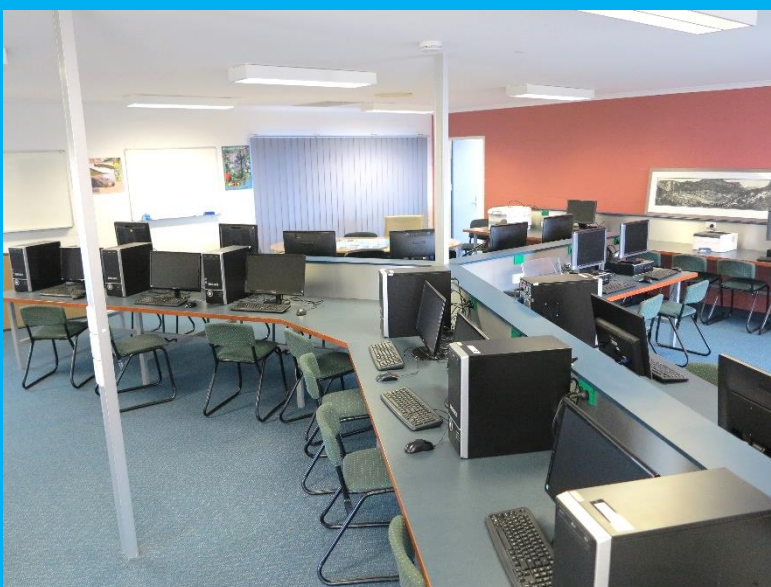
Half Day Rate     \$ 75.00             (maximum 4 hours)

Day Rate             \$ 150.00             (maximum 8 hours)

## Computer Room –

includes computer &  
internet usage in rates

Hourly Rate         \$ 75.00 per hour





## Words from the Gidarjil Managing Director

Kerry Blackman has been the managing director of Gidarjil for more than 15 years. GIDARJIL is a leading Indigenous organization in the Bundaberg and Gladstone regions of 15 years standing, economically independent with credibility and a proven track record. Its vision is to help Indigenous Australians participate in the wealth and prosperity of the broader Australian economy.



### **GIDARJIL currently delivers services in:**

- Conservation and land management
- Sea Country management;
- Cultural heritage;
- Education Employment and training;
- Indigenous languages;
- Indigenous arts coordination;
- Retail
- Governance services for the PCCC Native Title traditional owner group



# Welcome to PORT CURTIS CORAL COAST Sea Country

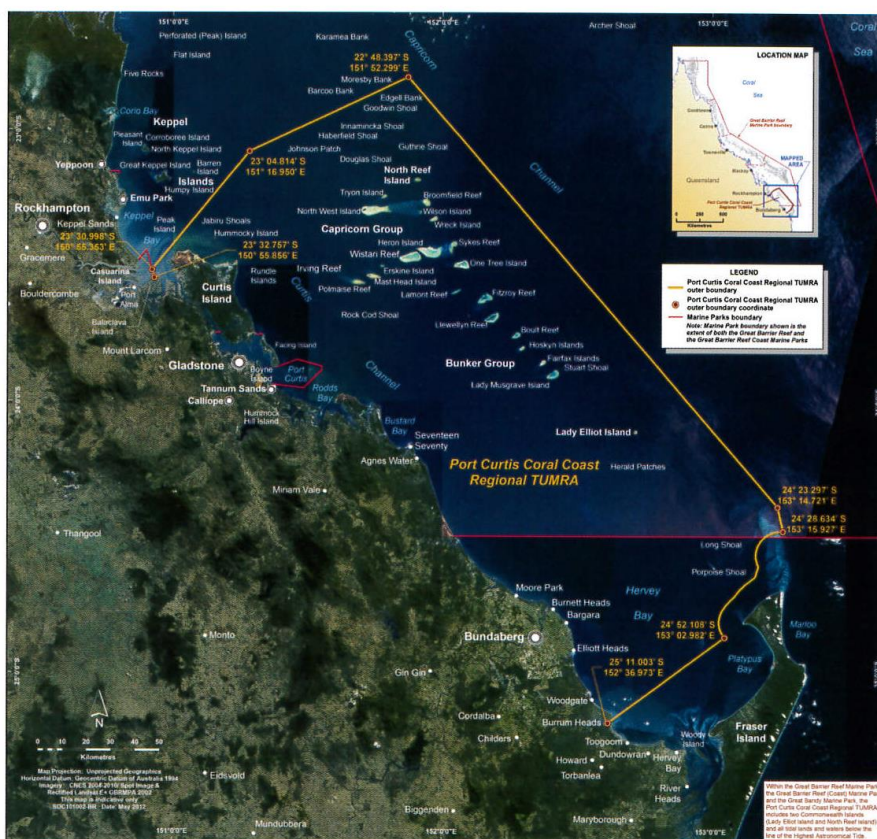
PCCC TUMRA LOGO

*You are in the sea country region of the Port Curtis Coral Coast Traditional Owners. Our four saltwater groups are Gooreng Gooreng, Gurang, Tarebilang Bunda and Bailai.*

Our sea country includes all the coastal areas between Balaclava Island and Burrum Heads, as well as Lady Elliot Island, North Reef Island and all tidal lands and waters below the line of the highest astronomical tide.

We take an active role in managing marine resources in our sea country for the future. Under our Port Curtis Coral Coast Regional Traditional Use of Marine Resources Agreement (TUMRA), we have agreed to limit green turtle harvest in specific areas and not harvest dugong.

We are proud of our sea country and welcome you. We work in partnership with the Australian and Queensland governments, and we ask you to help keep our sea country healthy by following marine park zoning rules and doing all you can to minimise the impacts of your visit.



For more information about the Port Curtis Coral Coast TUMRA, including Traditional hunting in the region, please contact: Gidarjil Development Corporation on 4130 7700 or 0412 760 501 (a/h), Great Barrier Reef Marine Park Authority on freecall 1800 990 177, or Queensland Department of National Parks, Recreation, Sport and Racing on 13 QGOV (13 74 68).



Australian Government  
Great Barrier Reef  
Marine Park Authority



Queensland  
Government



Gidarjil Development Corporation Ltd



**Kerry Blackman- Managing Director**

**[Kerry.blackman@gmail.com](mailto:Kerry.blackman@gmail.com)**

**Brent McLellan - TUMRA Coordinator**

**[tumra@gidarjil.com.au](mailto:tumra@gidarjil.com.au)**

**Tom Osborne – Sea Country Manager**

**[emtc.manager@gidarjil.com.au](mailto:emtc.manager@gidarjil.com.au)**

**Ric Fennesy – Caring For Country  
Manager**

**[Cfc.gidarjil@gidarjil.com.au](mailto:Cfc.gidarjil@gidarjil.com.au)**

**Corrie McColl – YBI Compliance  
Manager**

**[Compliance.manager@gidarjil.com.au](mailto:Compliance.manager@gidarjil.com.au)**

**Gidarjil Development Corporation**

**53 Walker Street**

**Bundaberg QLD 4670**

**PH: 07 4130 7700**

**FAX: 07 4130 7777**

